

Visitor Accessibility Guide for the Dingle Skellig Hotel



1. Contents
2. Overview, Contact and Getting here
3. Parking at the Hotel
4. Hotel Main Entrance
5. Reception and Lobby
6. Corridor and Access Routes
7. Lifts
8. Public Area Toilets
9. Baby Changing Facilities
10. Accommodation and Guest Rooms
11. The Coastguard Restaurant
12. The Blaskets Bar
13. Weddings, Events and Meetings
14. Kids Club and Playroom
15. Kids Club and Playroom
16. Leisure Club and Gym
17. Leisure Club and Gym
18. Leisure Club and Gym
19. The Peninsula Spa
20. The Peninsula Spa
21. The Peninsula Spa
22. The Peninsula Spa
23. While at the Hotel
24. Mobility Equipment, Assistance and Guide Dogs, Evacuation, Accessible Transport

Overview, Contact and Getting Here

Welcome to the Dingle Skellig Hotel Accessibility Guide

We are proud to be involved in Fáilte Ireland's Access for Success programme, an initiative focused on improving accessibility and inclusivity across the tourism and hospitality sector.

As part of this commitment, we have created this accessibility guide to ensure our hotel meets best practice standards for accessibility - creating a more welcoming and inclusive environment for all our guests and staff. From reviewing physical spaces to enhancing staff training and communication, we're dedicated to making meaningful, lasting improvements that benefit everyone. We have an accessibility and inclusivity committee of 13 hotel staff members.

We welcome feedback and any suggestions to improve our accessibility at the Skellig Hotel, please contact our accessibility and inclusivity champion Miriam on email miriam@dingleskellig.com or by phoning +353 (0)66 9150200.

Contact and Reservations

For reservations you can book directly on our website www.dingleskellig.com

You can also phone us on +353 (0)66 9150200

We can also be emailed on reservations@dingleskellig.com

Travelling to Dingle

The hotel is located at V92D5X2 and we have accessible parking outside the hotel close to the entrance. Car parking is free. The hotel has 4 EV Charging points.

Link to google map : <https://maps.app.goo.gl/JfqPvX9WfN6w5xBC8>

The public bus will stop in Dingle town approx. 750 meters from the hotel. Visit <https://www.buseireann.ie/> for timetables.

There is one accessible taxi/transfer company - Paudie O'Sé and he can be reserved by calling 087 1314391.

The public Local Link service which operates in the area and around Sleat Head offers an assistance service and over 90% of their services are wheelchair accessible. The TFI contact centre to arrange assistance is available to phone on 0818 294 015.

Parking at the Hotel

We have 4 accessible spaces close to the hotel entrance, and we have a further 7 spaces in our carpark which is a 100mtr distance from the hotel entrance. There are no steps and firm surface and the access is flat.

Accessible spaces close to the hotel entrance



We also have accessible spaces 100mtrs from the hotel entrance.

This parking area is located on ground level with no steps and firm surface. Users need to cross a local road which has a pedestrian crossing.

Accessible spaces 100mtrs from the hotel entrance.



Pedestrian Crossing from parking to the hotel.



Hotel Main Entrance

The main entrance is clearly identifiable and is has level access with step free entrance and firm surface. The door is a push panel door with a width of 75 inches when both doors are open.

There are safety markings on large glass panels on the door to avoid people walking into them.

The entrance is manned by a door attendant during May to September and at weekends outside of this. The entrance is well lit.

Entrance to the Hotel



Reception and Lobby

Seating is available for guests around the perimeter of reception.

The height of the counter is 45 inches.

There is a wide open lobby with a tiled floor.

There is a concierge desk in the lobby which is manned from May to September and weekends outside of this.

There is a printed welcome letter provided to guests on check in detailing the services in the hotel. This is in English and available in larger print if required.

Entrance to the Hotel Lobby



Entrance to the Hotel Lobby



Corridor and Access Routes

The ground floor of the hotel has step free access throughout.

The minimum width of the corridors is 49 inches.

The corridor width to our accessible rooms is 57 inches.

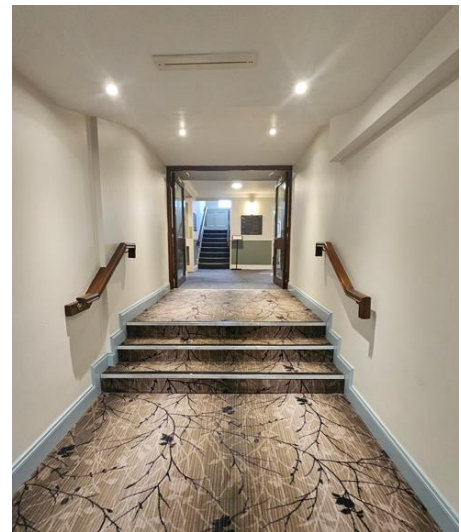
The floors of the corridors are carpeted.

There are grab rails where there are slight ramps between sections and where there are steps at the leisure center.

Corridor from reception to water station, guest rooms and lifts.



Steps from leisure club to Kids Club & Spa



Ramp Section between guest room corridors and lift



Lifts

There are 2 lifts in the hotel. These allow access to all floors of the hotel.

The clear lift opening of the lift in the original part of the hotel is 30 inches (Lift A)

The lift stops are not announced audibly in Lift A.

The clear lift opening in the section of hotel with Deluxe rooms is 35 inches (Lift B)

The lift stops and doors opening/closing is announced in Lift B.

The lift controls in lift A are at a height of 39 inch lowest to 44 inch highest.

The lift controls in lift B are at a height of 36 inch lowest to 48 inch highest.

The buttons for each floor are marked in Braille.

Lift A



Lift B



Public Area Toilets

There is one public accessible toilet. It is located directly across from the Blaskets Bar.

The access door is a pull handle door with a width of 39 inches.

There is one support handrail beside the toilet on the user's left-hand side.

The height of the toilet seat from the floor is 19 inches.

The width of the floor space at the left side of the toilet is 12 inches.

The width of the floor space at the right side of the toilet is 31 inches.

The length of the floor space in front of the toilet is 51 inches.

The length of the floor space in front of the washbasin is 35 inches.

The lower edge of the mirror is 27 inches above floor level.

The toilet floor is tiled.

Public Area Accessible Toilet Entrance



Public Area Accessible Toilet



Public Area Accessible Toilet



Baby Changing Facilities

Changing facilities for babies are available in the women's toilets next to The Atrium.

Changing facilities for babies are also available in the Accessible changing room at the Leisure Center.

Baby-changing facilities in the women's toilet are accessed through a push door with a width of 31 inches.

The folding baby changing table has a clear area underneath of 28 inches.

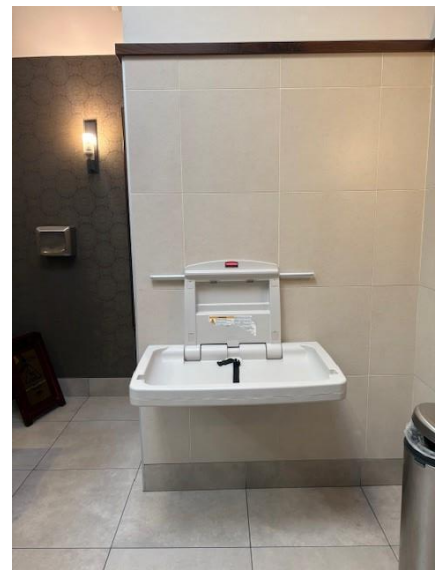
The folding baby changing table has a height of 31 inches.

The sink height is 36 inches with no clear area underneath.

Entrance to Baby Changing Facilities



Baby Changing Folded Down



Sinks at the Baby Changing/Ladies Toilets



Accommodation and Guest Rooms

There are 152 guest rooms at the Dingle Skellig Hotel. 2 of these rooms are fully accessible rooms.

We also have some rooms with showers only. We also have interconnecting rooms. All rooms are equipped with a Nespresso coffee machine, TV, Telephone, Hair dryer, Toiletries, Luggage rack and wardrobe. Our Deluxe guest rooms also have air conditioning.

We have 22 ground floor rooms that are suitable for limited mobility guests with walk in showers and grab rails in place in the showers. We have 2 fully accessible deluxe guest rooms which are not interconnected and can also take a fold bed for an additional adult/assistant.

Our deluxe Accessible guest room measurements are as follows:

Entrance Door is 33 inch wide.

Bathroom Door is 33 inch wide.

There are charging points for plugs and USB next to the bed.

The toilet is 18 inch tall, and the hand basin is 28.5 inch tall.

The shower seat is 17.5 inch tall and is a foldable fixed shower seat.

A free standing shower chair is also available on request.

Emergency pull cord at the toilet and shower.

AlertBuddy Deaf Person's Alert Kit available on request.

The bed is 22.5 inch high, with a pull cord on the right hand side and space underneath.

The floor is carpeted.

There is a cooler available in each room.

Room furniture can be rearranged as per requirements on request.

A fridge is available at reception for use for medicine storage if required.

Hoist equipment can be hired from rental@oflynmedical.com

Room 141



The Coastguard Restaurant

There is level access to the restaurant entrance on the ground floor. Part of the restaurant is accessible by a slope.

The door is a manual push door.

The clear door entrance is 152cm (when both doors are open)

Table service is always provided for breakfast and dinner. Hot food choices are on a menu with a cold buffet also available.

Quieter tables are available on request.

The minimum width of passage between tables and chairs is 145cm.

The height of self-service buffet is 66cm under and 79cm high.

The tables are rectangular.

Free height under the table for knees is 73.5cm, depending on the tables.

Lighting is good and even.

We can provide high chairs for babies and small children.

There are contrast markings on large glass windows or doors.

Large print menus are available.

Pictorial menus are available for dinner menus.

Menus describe the ingredients of meals with allergens listed.

Our menu includes meals for people who require special diets.

Entrance to the Coastguard Restaurant



The Baskets Bar

The Baskets Bar offers full table service for dining and drinks.

The tables have a free clearance under them of 71cm.

The bar counter is 117cm tall.

Large font menus are available on request.

Menus describe the ingredients of meals with allergens listed.

Our menu includes meals for people who require special diets.

Entrance to the Basket Bar is step free with a door width of 87cm.

Quieter tables are available on request.

The Baskets Bar Entrance



The Baskets Bar



Weddings, Events and Meetings

We host events, wedding ceremonies and receptions at the hotel in our largest function space which is called 'The Skellig Suite'.

Access to the outdoor drinks reception area, and ceremony area outside is at ground level.

The first door to outside is 172cm opening when both doors are open, and the second door is 138cm when both doors are open.

The entrance to the Skellig suite where we host large events and weddings is 167cm when both doors are open. This is step free access.

The bar counter is a height of 112cm.

The door to the Gallarus lounge, which is also our residents lounge is 149cm inches wide when both doors are open.

The accessible toilet is across from the bar in the main hotel.

Entrance to the Gallarus Lounge



Access to the Skellig Suite



Door to outside



2nd door to outside



Kids Club and Playroom

Our Kids Club is for children aged between 5-12 years (primary school age)

It is located on the ground floor with step free access.

It is open daily during school holidays for both morning and evening sessions, and at weekends outside of this.

A full activity programme for each day and time is available on check in or in advance by request. We use Craft materials on occasion (paint and glue).

Once a week during the summer we host an Animal Roadshow which takes place in a separate part of the hotel.

It is fully supervised by a female team of Garda vetted students aged 16+.

There are at least 2 members of staff present at all times.

Collection is only by authorised adult whose details are provided on check in to the kids club.

The main door to the kid's areas is 74cm wide.

The door to the kids club is 76cm wide.

The floor of the kids club is hard.

It is a bright large space.

There are other children there so it may be noisy.

There are a selection of sensory toys and balance boards available.

We have a nut free and popcorn free policy.

The nearest toilet is outside of the kids club. The nearest accessible toilet is at the Leisure Club.

Staff are not permitted to administer medication.

Our Playroom is located next to the Kids Club.

The door to the Playroom is 77cm wide.

The Playroom is also step free access and is self-supervised.

The Playroom has a baby gate at the door which is 77cm wide.

The door to the Crèche is 78cm wide.

The floor is hard.

The door to the baby changing area is 77cm wide.

The baby changing counter for the crèche is the height of 95cm.

The baby changing counter for the play room is the height of 86cm.

There are a selection of toys and books available to play with.

There is a cot and baby changing facility there.

There is a child high toilet in the Playroom which is 35cm high.

Entrance to the Kids Club Kids Club



Welcome Sign at the Kids Club



Kids Club



Playroom



The Leisure Club and Gym

There is level access to the leisure club via a door opening of 146cm and the changing rooms are to the right.

Leisure club counter height for visitors who sign in is 110cm. The counter has a wheelchair accessible area.

To the right of the reception counter there is a fully accessible changing room with self-contained shower with fixed shower seat fully equipped with hand rails at a height of 66cm and toilet and emergency pull cords. The door entrance width is 85cm. Access to the pool is via the corridor measuring a width of 93cm and door openings of 78cm.

Entrance to the leisure centre and pool changing rooms is via a hallway with a width of 93cm through 2 separate manual push doors for both men and women's changing rooms opening of 78cm for the ladies and 78cm for the men's.

There are 3 showers in the ladies just in front of the door access to the swimming pool, there are 2 toilet cubicles, 2 wash basins at the height of 84cm with a clear area underneath with the height of 68cm and 2 hairdryers with counter area at the height of 84cm with a clear area underneath with the height of 68cm and lockers available.

There are 3 showers in the gents just in front of door access to the swimming pool there are 2 toilets, 2 urinals and 2 washbasins 1 hairdryer and lockers available in the gents.

Access to the pool area is opposite the shower area via a door with an opening of 78cm for the ladies and 78cm.

Access to the main 17m pool is via a deck and is directly in front of you as you exit the changing rooms, The pool depth is 1.2m throughout and entrance to the pool water is via 6 steps of 16cm (hand rail available both sides) The pool length and width is pool is 17 x 6m. there are also 2 additional entrances at opposite ends of the pool, both with 6 steps down in to the pool with a railing on the right at the lower deck side (steam room side) and on the left at the upper deck side (small pool) side.

Access to the children's pool is up 3 steps with a height of 16cm each a short deck walk down 3 steps height 16cm each with a railing on the left as you go down on to upper deck wall straight and keeping to the left there is 5 steps height 16cm each with railing on the right side. There is a gentle slope in the main entrance to small pool covered with blue matting. Depth of kids pool is 0.63m to 0.9m

The Steam Room entrance area which is for over 16's only is to the right of the Main Pool Entrance with a deck walk length to the entrance door opening of 68cm to access the steam room.

Jacuzzi is on a raised deck level to the left as you exit the changing rooms up 3 steps and a height of 16cm with handrail on the right available. There is a steep stepdown in to the Jacuzzi of 48cm. 2 handrails are provided and it is recommended to use these and step in facing away from Jacuzzi.

There is a deck level cold shower available next to the steam room.

The Gym is on the ground floor with door entrance of 146cm, it is an open plan air-conditioned gym and features 3 rooms, a variety of fitness equipment including treadmills, exercise bikes, cross trainers on the first ground floor level and the next 2 room are up 3 steps each with a 16cm height and a width of 106cm with railing on both sides. It features a weight training studio with various weight machines including squat racks and a selection of free weights and machine weights.

Leisure Club Entrance



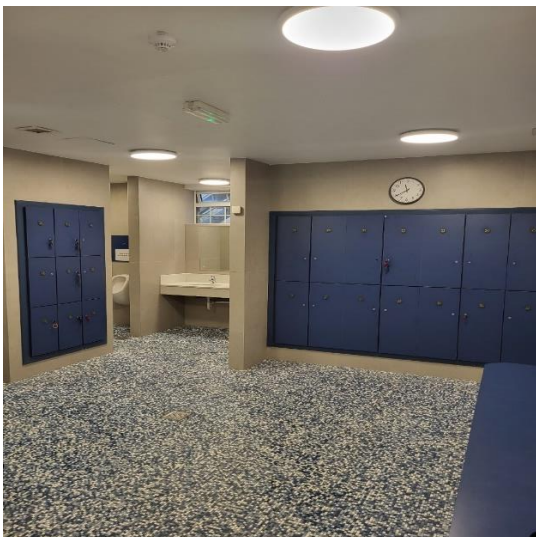
Accessible Changing Room



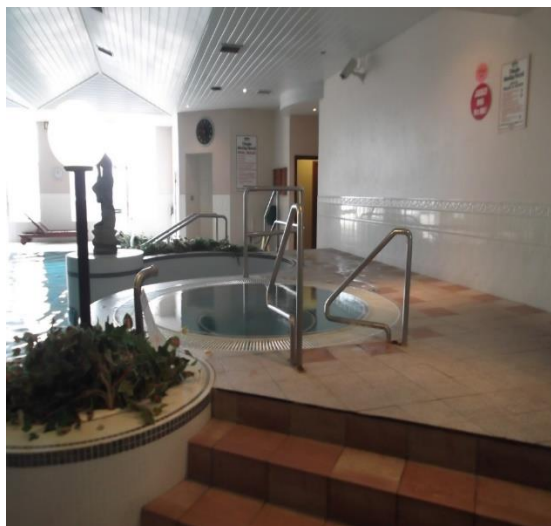
Corridor to changing rooms



Gents Changing Rooms



Jacuzzi



Children's Pool



Entrance to the Gym



Entrance to the weights area



The Peninsula Spa

The Peninsula Spa is located on the second floor in the hotel next to Bedroom number 200. There are two lifts in the building that can access the second floor.

The Spa is for over 18's. It is a quiet space.

Soft relaxing music will be playing in the background.

We request guests to wear swimwear whilst using our wet facilities and we will provide robes and slippers or you can purchase flip flops.

The Spa Entrance is 116cm in width and the floor is carpeted.

There is a push door into the spa reception area that is 78cm and be opened wider to 100cm.

The reception desk is 100cm in height and is curved with a marble top.

The Ladies Toilet and Changing Room Door is a push and is 75cm in width, which opens up onto a tiled floor.

Entrance to the ladies and men's changing rooms is via the right of the reception desk.

There is a turn down handle entry and exit into the accessible toilet. The toilet floor is tiled.

The toilet door width when open is 75cm.

The height of the toilet seat from the floor is 47cm.

The width of the toilet floor is 150cm

The length of the floor space in front of the toilet is 202cm with the door closed.

The width of the floor space at the left side of the toilet is 38cm. The width of the floor space at the right side of the toilet is 75cm.

There are four support handrail beside the toilet on both sides of the user. One is a pull down support handle of the user's left side. One of the support rails is next to the wash basin on the user's right side.

The width of the floor space at the left side of the toilet is 38cm. The width of the floor space at the right side of the toilet is 75cm.

In the Ladies Changing Rooms there is 1 toilet cubicle, 3 wash basins, 2 hand dryers and 1 hairdryer and 1 GHD and lockers are available.

There are two shower cubicles with a step up of 17cm. The door width of the cubicle is 75cm and the shower door is 75cm. The cubicle is a very limited space.

In the Gents Changing Rooms there is 1 toilet, 1 wash basin, 1 hand dryer, 1 shower with a step up of 17cm and lockers are available.

From the changing room to the relaxation suite is a curved wall that goes from carpet to tiles.

Entrance to the Relaxation Area is via a door opening of 78cm and can be extended to 92cm. The floor goes from carpet to a tiled floor with a non-slip mat as this is a wet area.

The Sauna and Steam Room entrance is to the right of the Relaxation suite entrance. On the left is a work top and under counter fridge that guests have access to plastic glasses and drinking water juices and dried and fresh fruit and nuts and seeds.

To the right of the counter top is the Sauna, Steam and level access swing open/close door cold shower available. The widest part of this area is 133cm.

The sauna is a pull open door to the left with level access and is 88cm in width.

The steam room is a pull open door to the right with level access and is 87cm in width.

Around the corner to the left of the steam room and sauna is the relaxation area with loungers that are 40cm in height from the floor with an adjustable back rest. This is where you gain access to the outdoor hot tub and spa balcony.

Exit to the outdoor hot tub is via an opening of a pull handle door to the left (85cm in width), a step up and a second door push handle to the right (85cm) with a step up of 3cm and down on the outside of 8cm. There are hooks to leave towels or robes between both doors.

To get to the hot tub there are 6 Steps (20cm each) up that are wooden with a non-slip outdoor grip on them and a hand rail on the right.

To get into the hot tub if the bubbles are on, there may be poor visibility. There is a hand rail to the right with a step down of 40cm into the water. To sit there is another step down of 20cm and another step down of 20cm to the foot well, where you will be able to sit.

Other guests may want to use the hot tub at the same time as you and it can fit up to 6 people.

If you have mobility issues you may find getting in and out of the hot tub challenging.

In the winter or late evening when it is dark there are outside lights to aid guests.

All our treatment doors are 75cm in width and are chair user friendly. Our treatment beds are electronic and can be lower to 65cm from the floor and have adjustable back rests. The floors in the treatment rooms are parquet wooden flooring and one is tiled.

We also have one treatment room that has a level access shower that is chair friendly. It has two hand rails (one to the users left) and a pull down seat (to the users right).

The corridor to the treatment rooms maybe dark as we try to create a relaxing atmosphere going in and out of your treatments. The narrowest part of the corridor is 94cm and has carpet.

Our Hydrotherapy bath has two steps up to it that are 17cm in height. The depth of the bath to step into is 55cm. The hydrotherapy bath has lights that change colour and can be switched off if preferred. The jets are very vigorous which will increase your body heat.

Spa Entrance



Ladies Changing and Toilet Entrance



Ladies Toilet



Ladies Changing Room



Entrance to Shower in changing room



Entrance to Relaxation Suite



Sauna and Steamroom



Relaxation Suite



Outdoor Hot Tub



Entrance to Treatment Room



Interior of Treatment Room



Accessible Treatment room shower



Treatment Room Corridor



At the Hotel

We are available in advance of any planned visit for a familiarisation video call to ensure guest comfort at all times.

We offer a 24 hour call service.

We have water stations on each floor of the hotel with cold filtered natural water. These are a height of 90cm.

We offer room service.

We offer free WiFi throughout the Hotel on the Skellig_WiFi network. The password will be on your room key card.

Our staff are trained to serve customers with access requirements.

We have one defibrillator on site located at reception and our first aid responders are trained to use this.

We have 10 first aid responders in the hotel.

We continually monitor and improve our access services, based on customer feedback and regular staff briefings.

We can provide assistance to customers with wheelchairs or guests that require any assistance to reach their room, if requested, and help with your luggage.

We have a door person available during peak times.

We have plugs in public areas for charging of mobility scooters/ aids.

You can borrow a wheelchair at our hotel with advance notice.

You can borrow a portable shower seat at our hotel with advance notice.

We provide an Alert Buddy for guests with hearing impairments for their overnight stay.

We have a sensory box that you can book in advance if required.

Alert Buddy Alarm



Mobility Equipment

Medical Equipment including hoists can be hired from info@oflynnmedical.com

Assistance/Guide Dogs

Assistance and guide dogs are welcome on our premises.

We provide water bowls for assistance/guide dogs.

We have ample outdoor space for assistance/guide dogs who are staying overnight.

We have waste bags available during your stay.

Evacuation Procedures

We have an evacuation procedure in place in case of emergency.

We have door hangers for outside your door if you need assistance in case of an emergency.

Our staff are trained to assist people with disabilities in emergency situations.

Evacuation routes are signposted.

Accessible Taxis and Transport

There is one accessible taxi/transfer company - Paudie O'Sé and he can be reserved by calling 087 1314391. Advance booking is required.

The public Local Link service which operates in the area and around Sleah Head offers an assistance service and over 90% of their services are wheelchair accessible. The TFI contact centre to arrange assistance is available to phone on 0818 294 015.